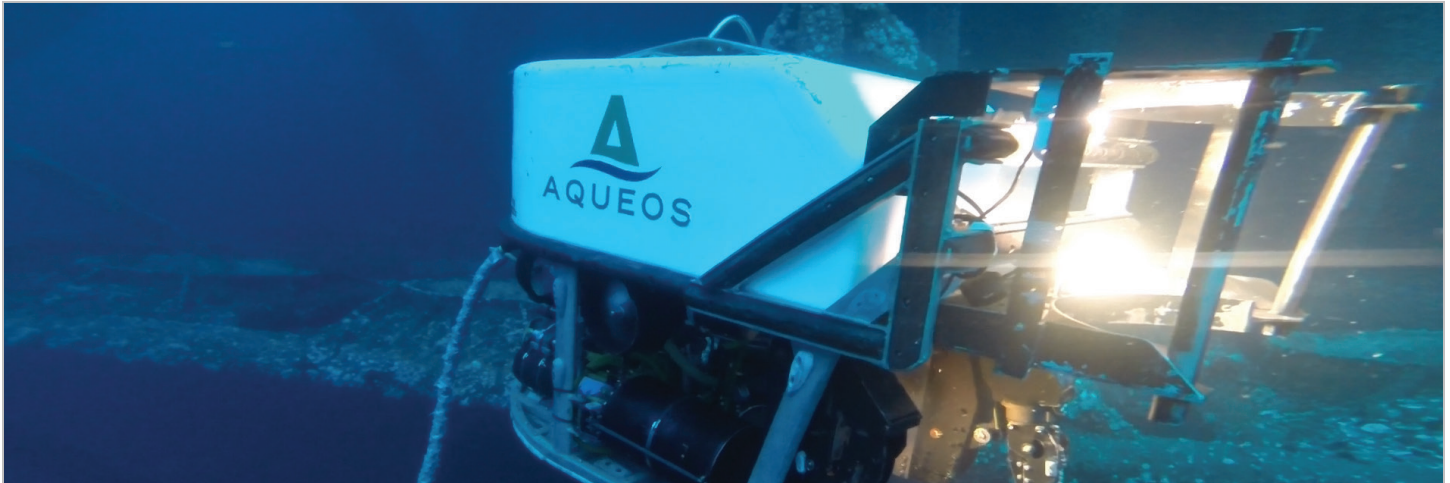


HYSUB 20 - REMOTELY OPERATED VEHICLE

Light Work Class ROV



Features:

- 2,000' Operating Depth
- 2ea Hydraulic Manipulators
(Five function and Four function)
- High Resolution Color Video Camera (CCD)
- Low Light Wide Angle B&W CCD
- High Resolution Color Imaging Sonar
- Camera Pan and Tilt
- HID and Halogen Lighting
- Computer Controlled:
- Auto Altitude, Depth and Heading
- Digital Stills Camera (Optional)
- Climate Controlled Operations Van
- Rapid System Deployment
- Complete Spares

Documentation:

- DVD and Hard Drive Recording
(Video and Sonar)
- Cathodic Potential Measurements
(Data Recorded on Video and Hard Drive)

Capabilities:

- Pipelines-External/Internal
- Offshore Platforms
- Cathodic Potential
- Power & Communications Cables
- Dams
- Insurance Surveys
- Biological-Geological Surveys
- Acoustic Tracking & Positioning
- Search and Recovery Operations

Optional Equipment:

- Broadcast Quality Video
- Laser Scaling and Precision Measurements
- Hydraulic tooling
- High Resolution Digital Imaging
- CTD Conductivity, Depth and Temperature Unit

HYSUB 20 - REMOTELY OPERATED VEHICLE

Light Work Class ROV



DEPLOYMENT SYSTEM	
Length:	15.5'
Width:	8'
Weight:	17,000 lbs

CONTROL AND SUPPLIES VANS	
Lengths:	20' and 4'
Width:	8'
Heights:	10' and 8'
Weights:	15,000 and 6,000 lbs



VEHICLE	
Length:	7'
Width:	3.5'
Height:	4.5'
Weight in Air:	2,000 lbs
Frame:	6061 T6 Aluminum
Fittings:	316 Stainless Steel
Depth Rating:	3000'
Payload:	100 lbs (additional flotation can be added for larger payloads)
Horsepower:	2 each 10hp Power Units
Lighting:	4 each x 250 watt Halogen 2 each x 70 watt HID
Cameras:	1 each Color Zoom CCD 1 each Low Light Wide Angle B&W CCD 1 each Low Light B&W CCD (Vehicle can be fitted with up to 5 cameras as required for operations)
Navigation:	Mesotech MS1000 Color Imaging Sonar Teledyne-CDL TOGS Fiber Optic Gyro (FOG) True North Revolution 2X Compass Paroscientific Digiquartz Depth Sensor Mesotech 200 Khz Altimeter
Telemetry:	Asynchronous serial data transmission for control of auto heading, depth, altitude and data displays.
Power Requirements:	480 VAC, 3 Phase, 60 Hz, 50 KVA

Gulf of Mexico - Office
231 Highway 96 | Broussard, LA 70518
P: (337) 714-0033 | F: (337) 839-8354

West Coast - Santa Barbara Office
418 Chapala Street, Suites E & F | Santa Barbara, CA 93101
P: (805) 364-0570 | F: (805) 334-7210

West Coast - Ventura Office
2550 Eastman Avenue, Suite 8 | Ventura, CA 93003
P: (805) 676-4330 | F: (805) 676-4335